



October 2023 - January 2024 Residential Recycling and Garbage Collection Calendar

ZONE **B**



This Calendar provides the collection details and schedule you need before the Green Bin and other waste collection changes start January 15, 2024.

Between October 1, 2023 and January 15, 2024 London's waste collection will remain the same with one exception on how we deal with large items (see below). This Calendar remains in effect until the week of January 15, 2024.

For complete waste collection program details you can:

- Retain your 2022/2023 Waste Reduction and Conservation Calendar
- Download the Recycle Coach app or our website version
- Identify your zone or view your collection dates at london.ca/collectioncalendar

london.ca/wastemanagement

What is a Green Bin?

A Green Bin is like a blue (recycling) bin, but for the food and organic waste in your home. From mid-October to mid-December 2023, we will be delivering Green Bins, new program information, and 2024 collection schedules to all participating homes.



london.ca/greenbin

There are new rules for the collection of large items in garbage.

Beginning October 1, 2023, households need to book the pick-up of large items on collection day.

Booking requests must be completed at least 5 business days in advance, online at london.ca/garbage or by phone at 519-661-2489. Collection will occur on your next scheduled garbage day.

Medium items - Do not require booking

- Up to 1 metre wide and 1.5 metres tall
- Generally requires 1 person to safely place at curb
- 2 cubic metre limit per collection (e.g., 2 kitchen chairs or 1 medium shelf)

Large items - Require booking 5 business days in advance

- Over 1 metre wide and 1.5 metres tall
- Generally requires 2 or more people to safely place at curb
- 4 item limit per collection

london.ca/garbage



Contact us:

london.ca/wastemanagement
519-661-CITY (2489)
3-1-1 (within London)
service@london.ca
service.london.ca

Our free online or mobile app:



london.ca/whatgoeswhere

Use online or download for collection reminders, search tool, and complete program details!

October 2023

ZONE **B**

SUNDAY	MONDAY	TUESDAY	WEDNESDAY	THURSDAY	FRIDAY	SATURDAY
1	2 National Day for Truth and Reconciliation (observed)	3 	4	5 	6	7
Yard Waste Collection – place at curb by 7 a.m. Tuesday for pickup this week.						
8	9 Thanksgiving Day	10	11	12	13	14
15 Waste Reduction Tips	16 Recycle everything you can! 	17 Reduce plastic waste in London. Take your own bags when shopping.	18 Use a backyard composter or digester to manage food waste.	19 Choose 'reusables' over single-use cups, bags, and other products.	20 Plan your meals and buy only the food you need.	21 Check out businesses like Reimagine Co; a package-free grocery store.
22 Take advantage of the London Thing Library to borrow items instead of having to buy them.	23 	24 	25	26	27	28
Yard Waste Collection – place at curb by 7 a.m. Monday for pickup this week.						
29	30	31	National Waste Reduction Week October 16 - 22, 2023 Choose to refuse: Plastic bags, straws, cups and stir sticks. Choose to reuse: Bring to donation centres, share with friends & relatives, or use online classifieds and neighbourhood groups. Swap. Re-purpose. Repair. Give away. Sell. Repeat!!			



Garbage & Recycling Collection



Yard Waste Collection

November 2023

ZONE **B**

SUNDAY	MONDAY	TUESDAY	WEDNESDAY	THURSDAY	FRIDAY	SATURDAY
 Download the app for complete program info and schedule.  						
5	6	7	8 	9 	10	11 Remembrance Day
12	13 	14	15	16	17 	18
Yard Waste Collection – place at curb by 7 a.m. Monday for pickup this week.						
19	20	21	22	23	24	25
26 	27	28	29	30	Winter Safety Tips Please keep collectors safe by placing waste set outs on level ground, within 1 metre of curb and not on snowbanks.	





Garbage & Recycling Collection



Yard Waste Collection

December 2023

SUNDAY	MONDAY	TUESDAY	WEDNESDAY	THURSDAY	FRIDAY	SATURDAY
 Christmas Tree & Season Greenery Remove any decorations and take trees and greenery to an EnviroDepot or wait until spring and place out for Yard Waste Collection week. Trees stored in backyard can become a welcome habitat for birds or small animals.					1	2
3	4  Clarke Rd. and Oxford St. EnviroDepots to winter hours (see page 6).	5 	6	7	8	9
Yard Waste Collection – place at curb by 7 a.m. Monday for pickup this week.						
10	11	12	13 	14	15	16
17	18	19	20	21 	22	23
24	25 Christmas Day	26 Boxing Day	27	28 Additional EnviroDepot Hours: Oxford St. & Clarke Rd.	29	30
31						


Garbage & Recycling Collection


Yard Waste Collection

Additional EnviroDepot Hours (12 p.m. to 5 p.m.)

January 2024

SUNDAY	MONDAY	TUESDAY	WEDNESDAY	THURSDAY	FRIDAY	SATURDAY
	1 New Year's Day	2 Additional EnviroDepot Hours: Oxford St. & Clarke Rd.	3 3-Container Exemption Collection 	4	5	6
7 Additional EnviroDepot Hours: Oxford St. & Clarke Rd.	8	9	10	11 	12	13
14	 Green Bin collection begins Use new schedule delivered with Green Bin Full details at london.ca/greenbin					20
21	22	23	24	25	26	27
28	29	30	31	When Green Bin collection begins the week of January 15, 2024, your Green Bin and Blue Box will be collected every week and your garbage will move to every other week. Find complete detail at london.ca/greenbin		


Garbage & Recycling Collection

Additional EnviroDepot Hours (12 p.m. to 5 p.m.)

Garbage Collection

london.ca/garbage

DOs

Use standard garbage bags or metal or plastic cans (minimum 30 L; maximum 125 L).

Maximum weight for bags or cans is 20 kg (44 lbs).

Bags must be larger than 65 x 90 cm and items that can fit in a garbage bag or can should be in one.

Large items such as furniture or mattresses require booking in advance; 4 item limit.

Medium items up to 1 metre wide and 1.5 metres tall may be placed out for collection without booking; 2 cubic metre limit. See page 1 for more information.

Set garbage at the curb by 7 a.m., but no earlier than 6 p.m. the night before. Remove emptied cans or any non-collectable waste from curb by the end of collection day.

Dog poop and cat litter must be double-bagged, free of liquids, and placed inside a larger bag.

Have extra garbage? Bring to an EnviroDepot or use Garbage Tags for curbside collection over the 3-Container Limit (\$1.50/container).

3-CONTAINER LIMIT

3-Container Limit Collection

1 container = 1 can or bag



Maximum container weight = 20 kg (44 lbs)

Maximum container size = 125 L cans or 80 cm x 125 cm bags

- Collectors will not reach inside cans to remove bags or loose waste.
- Waste should not extend above rim of can or be placed on top of can.
- 3-Container Limit applies to each registered residential unit. i.e., duplex = 6 containers
- Containers over the limit without a garbage tag will not be collected.

Have extra garbage?

- Accepted at EnviroDepots for a fee (see page 4).
- Use Garbage Tags for collection of containers over the 3-Container Limit (\$1.50/tag). Tags can be purchased at the EnviroDepots (see page 4) or check london.ca/garbage for other purchase locations.
- There are four collections per year when the 3-Container Limit is not enforced. Check schedule for these dates in early September, following Christmas, following Easter, and in late April/early May.
- Divert garbage from landfill, use a home composter or digester, available for purchase at EnviroDepots for just \$20. More info at london.ca/compost

DON'Ts

Don't set out small items or use undersized bags (grocery or kitchen).

These materials will not be collected:

- Appliances & electronics
- Cracked or broken toilets
- Fluorescent bulbs & tubes
- Renovation materials
- Scrap metal (bikes, metal furniture, etc.)
- Tires

Don't place these items loose into the garbage: sawdust, cigarette ash, fireplace ash, powders, vacuum dust or personal protective and hygiene products such as tissues, napkins, towels, gloves & masks. Bag these items and place in a large bag or container.

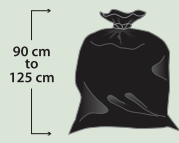
Don't put broken glass, or sharp metal objects in regular garbage. Place in a sealed cardboard box and clearly label "Caution Sharp" for collectors.



Don't put needles in the garbage. Place in a rigid container and contact your local pharmacy or visit healthsteward.ca or london.ca/needles for safe disposal options.

Acceptable Containers

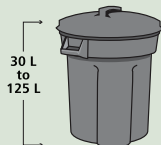
65 cm to 80 cm



Less than 20 kg (44 lbs)

Use standard garbage bags, not undersized bags or any other small containers.

If an item can fit into a can or bag, it should be in one.

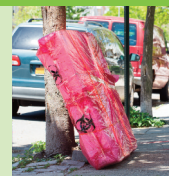


Less than 20 kg (44 lbs)

Lids must easily detach from garbage cans – free of hinges, ropes, and bungee cords.

Mattresses & Furniture

Large items; over 1 metre wide and 1.5 metres tall require booking.
Find details on page 1 or london.ca/garbage



- When disposing of furniture and mattresses that are soiled or exposed to bed bugs, cover and seal in plastic mattress cover (available for purchase from hardware stores and self-storage locations).

Yard Waste london.ca/compost

- Place Yard Waste at the curb by 7 a.m. on the first day of your scheduled week, but no earlier than 6 p.m. the night before.

Crews will only collect from each street or complex once during the week.

- Includes: Christmas trees, brush, and pumpkins, or leaves in paper bags, plastic or metal cans between 30 L – 125 L or certified compostable bags with logo:



- **Brush** must be less than 10 cm in diameter and cut into 1 m lengths. Tie in bundles with twine.
- **Maximum weight** per container or bundle is 20 kg (44 lbs).
- **Container size:** 30 L minimum and 125 L maximum.
- **No grass clippings.**



Paper Bags



Reusable Containers



Certified Compostable Bag

DON'Ts We do not accept:

- Dirt/soil
- Flower pots/trays
- Grass clippings
- Kitchen scraps
- Large branches
- Painted or treated wood
- Pet waste
- Railway ties
- Rocks
- Sod
- Tree stumps

Recycling Collection

Use separate Blue Boxes for Paper and Containers. Blue Boxes must be properly sorted for collection.

london.ca/recycle



Paper

Household paper



Newspapers & flyers



Egg cartons, tubes & boxes

Flatten and remove plastics



Magazines, catalogues & books

Remove hard covers



Cardboard boxes

Flatten and tie in bundles up to 75 cm x 75 cm x 20 cm



Drop off oversized or large quantities at an EnviroDepot

Containers

Glass bottles & jars

Please remove food and rinse



Cartons

e.g. milk, juice, soup



Cardboard cans

e.g. frozen juice cans

Ice cream tubs

Steel cans

Please rinse. Place lids inside.

Empty metal paint cans

Remove lids

Empty aerosol cans

Aluminum foil & containers

Plastic containers

e.g. cups, bottles, jugs, tubs, pots, trays and clamshells

Rigid plastic

e.g. packaging around toys, batteries, etc.

Reuse & Recycling Options

From tires, paint, or batteries, to textiles, electronics, or other household items, there are many locations where we can donate, drop-off, or recycle materials that aren't collected at the curb or may still have good use left in them. Visit london.ca/recycle for a list of materials that are also accepted by local companies for reuse or recycling and other tips on waste reduction and diversion!



Toilet & Ceramic Recycling

Toilets dropped-off at the City of London **East and West EnviroDepots** will be recycled free of charge. For ceramics recycling, please remove all non-ceramic parts such as toilet seats, any insulation inside toilet tanks, or plumbing parts.



Recycling DOs

- Empty or rinse all containers
- Maximum weight is 18 kg (40 lbs)
- Sort it Right!
- Use 2 or more Blue Boxes
- Use Blue Boxes between 45-95 L

Recycling DON'Ts

It does not go in your Blue Box:

Paper:	Glass:	Plastic:	Metal:	Other:
Unbagged shredded paper, waxed or foiled paper & boxes, construction paper, gift wrap, photos, or wood	Broken glass, dishes, drinking glasses, ceramics, light bulbs, mirrors, window panes	All wraps, films, packaging, bags, pouches, cutlery, Styrofoam™, foam packaging, hangers, toys, dishes, coffee pods	Hangers, pots & pans, propane canisters, appliances, batteries	Hazardous and Special Product containers, all medical waste, wooden food crates

Hazardous and Special Products

london.ca/hsp

Hazardous and Special Products (HSP) includes items that are considered toxic, poisonous, flammable, corrosive, or explosive.

HSP is not collected with garbage or recycling and shouldn't be poured down any drain or sewer.

Improper disposal of HSP can be harmful to humans, animals, and the environment. Know what items are considered HSP and take proper care to safely dispose.

Accepted at HSP Depot



- Gasoline
- Automotive fluids/batteries
- Paints, thinners, & solvents
- Pesticides, fertilizers
- Glues & adhesives
- Household cleaners
- Nail polish & remover
- Fats, cooking oil & grease
- Household batteries
- Fluorescent bulbs & tubes
- Thermometers, thermostats
- Smoke/CO2 detectors
- Propane tanks
- Alcohols & peroxides

- Incandescent & LED light bulbs can be disposed in regular household garbage.
- Empty metal paint cans may be recycled in your Containers Blue Box (lids off).



HSP Disposal Options

Batteries, paint, fluorescent lights, used motor oil & filters and propane tanks are also accepted at other locations in the city; download London's **Recycle Coach app** or use it online at london.ca/whatgoeswhere to find a location near you.

Hazardous and Special Products Depot
3502 Manning Dr.

Hours: Monday to Friday: 8 a.m. to 4 p.m.
Saturday: 8 a.m. to 3 p.m. • Closed Sundays & statutory holidays



1 West – Oxford Street EnviroDepot • 1450 Oxford St. W

MATERIALS ACCEPTED	AVAILABLE FOR PURCHASE	HOURS
<ul style="list-style-type: none"> Batteries Bikes (repairable) Blue Box recyclables Electronics Empty oil & antifreeze containers Fats, cooking oil & grease Fluorescent bulbs & tubes Goodwill donations (Oxford only) Metal, appliances & scrap Propane tanks (BBQ & 11b tanks only) Tires Yard Waste 	<ul style="list-style-type: none"> Blue Boxes \$10 Composters & Digesters \$20 Garbage tags \$1.50/tag* 	<p>Summer</p> <p>Monday to Friday 12 p.m. to 7 p.m. Saturday 8 a.m. to 5 p.m. Sunday 11 a.m. to 5 p.m.</p> <p>Winter - December 5 to March 11</p> <p>Wednesday 12 p.m. to 5 p.m. Saturday 8 a.m. to 5 p.m.</p> <p>Additional winter dates:</p> <p>December 28 12 p.m. to 5 p.m. January 2 & 7</p> <p>Statutory Holidays</p> <p>Open Thanksgiving October 9</p> <p>Closed for remaining statutory holidays</p>
<p>MATERIALS NOT ACCEPTED</p> <ul style="list-style-type: none"> Loose garbage & large items (mattresses, boxsprings, couches, furniture, etc.) Hazardous and Special Products Sod, dirt, rocks, tree stumps** Tree branches over 10 cm in diameter** 	<p>FEES</p> <ul style="list-style-type: none"> Bagged garbage \$1.50/bag* Grass clippings \$1.50/bag Renovation materials: Minimum fee \$27* Car/SUV \$54* Van/Truck/Small Trailer \$75+* Appliances with refrigerant Charges may apply <p>Effective October 1, 2023. Cash no longer accepted. Credit or debit only.</p>	
<p>FEES apply</p> <ul style="list-style-type: none"> Bagged garbage only Grass clippings Renovation materials Appliances with refrigerant 		

3 North – TRY Recycling EnviroDepot • 21462 Clarke Rd. (Under City contract)

MATERIALS ACCEPTED & FEES	AVAILABLE FOR PURCHASE	HOURS
<p>Same as above, excluding renovation materials not accepted at this location.</p>	<ul style="list-style-type: none"> Blue Boxes \$10 Composters & Digesters \$20 Garbage tags \$1.50/tag* <p>Effective October 1, 2023. Cash no longer accepted. Credit or debit only.</p>	<p>Monday to Friday 7 a.m. to 5 p.m. Saturday 8 a.m. to 12 p.m.</p> <p>Closed Sundays & statutory holidays</p>

4 South – W12A Landfill & EnviroDepot • 3502 Manning Dr.

MATERIALS ACCEPTED	AVAILABLE FOR PURCHASE	HOURS
<ul style="list-style-type: none"> Bikes (repairable) Blue Box recyclables Electronics Fats, cooking oil & grease Metal, appliances & scrap Tires Yard Waste 	<ul style="list-style-type: none"> Blue Boxes \$10 Composters & Digesters \$20 Garbage tags \$1.50/tag* 	<p>Monday to Friday 8 a.m. to 4 p.m. Saturday 8 a.m. to 3 p.m.</p> <p>Closed Sundays & statutory holidays</p>
<p>MATERIALS NOT ACCEPTED</p> <ul style="list-style-type: none"> Renovation materials (East & West EnviroDepots only) Sod, dirt, rocks, rubble, tree stumps** Tree branches over 10 cm in diameter** 	<p>FEES</p> <ul style="list-style-type: none"> 0 - 100 kg \$8 101 - 200 kg \$15 201 - 400 kg \$30 401 - 600 kg \$45 601 - 800 kg \$60 801 - 1000 kg \$75 1000+ kg \$75/tonne Appliances with refrigerant Charges may apply <p>Cash, credit, and debit accepted on all items</p>	
<p>FEES apply</p> <ul style="list-style-type: none"> Small load garbage, large items (furniture, mattresses, etc.) Appliances with refrigerant 		

* Pricing increase as of January 1, 2024
 **Contact companies like Green Valley Recycling and TRY Recycling

NEW: On **October 1st, 2023** the **East, West and North EnviroDepots** will **no longer be accepting cash as payment option.** Credit and debit will be accepted on all items.