

Trail Closure Notice

Metamora Bridge Winter 2020

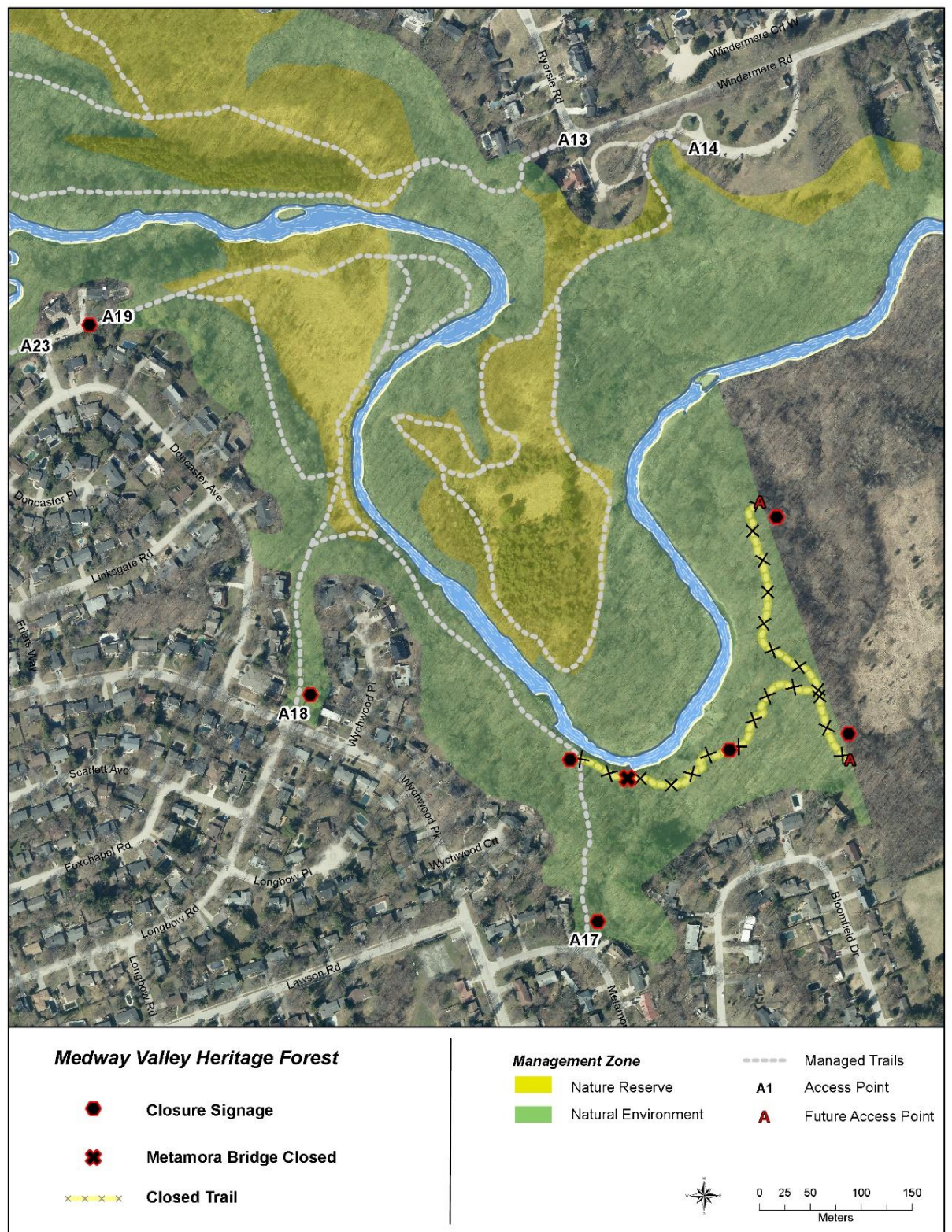
WHAT & WHERE:

This section of trail is temporarily closed. Please detour to avoid the area until the Metamora Bridge and associated trails can be safely re-opened.

WHY & WHEN:

The foundation supporting the Metamora Bridge has been undermined due to erosion and the structure has been deemed unsafe. **Trails in this part of the ESA are temporarily closed for public safety.** Options for the repair and removal of the bridge are being explored, with consideration for accessibility and environmental protection.

The bridge and associated trails will remain closed until the bridge is repaired or an alternate solution is finalized.



For more information please contact:

City Planning
planning@london.ca
519-661-4980

